

Pasture Weed Assessment

Producer: Alex Stewart

Field Name: Home Quarter LLD: SE 20-50-3-W4

Field size: 60 ac (22 ha)

Target/Problem weeds:

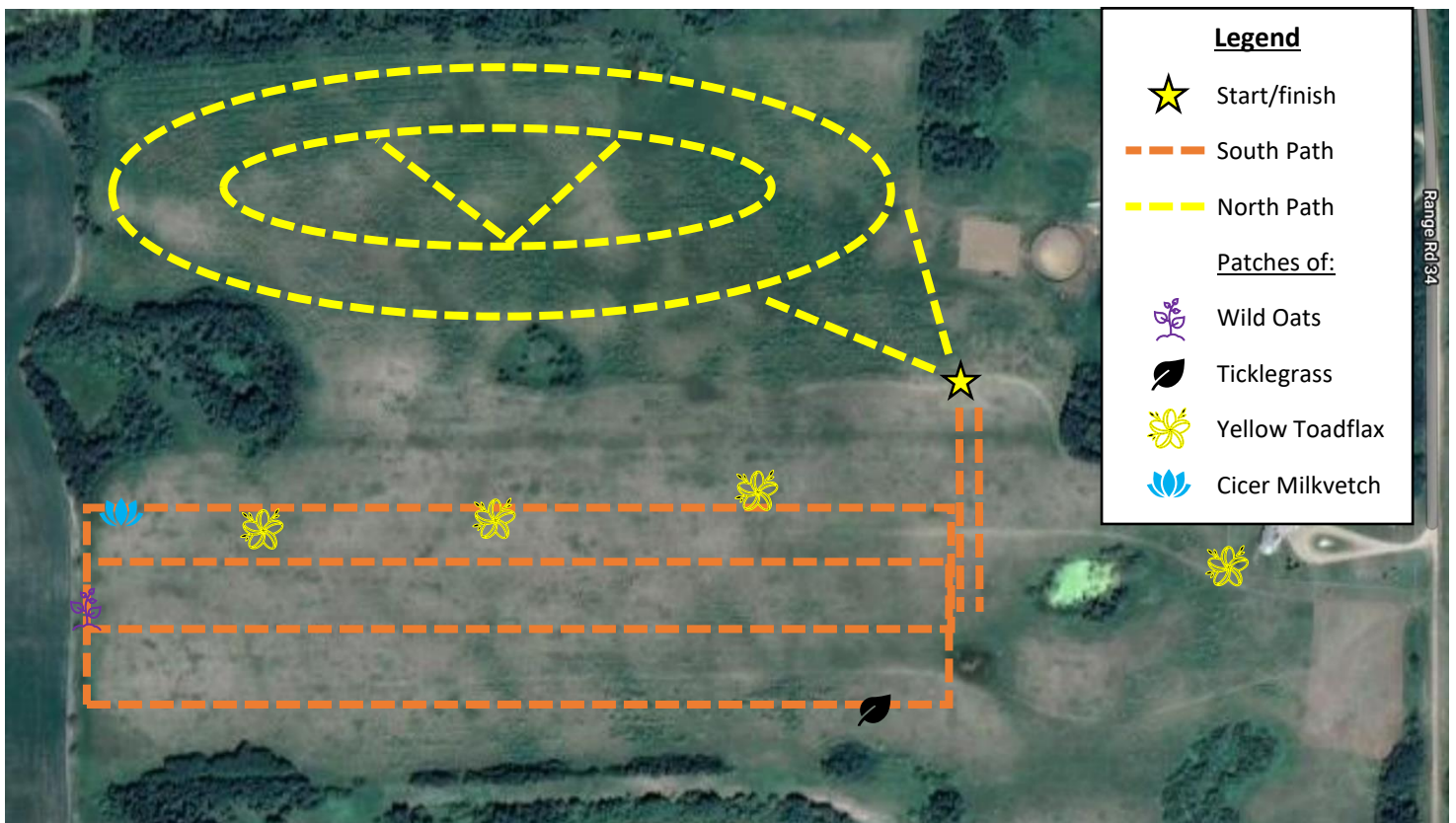
Foxtail Barley (*Hordeum jubatum*) , Cheatgrass/Downy Brome (*Bromus tectorum*),
Canada Wild Rye (*Elymus canadensis*)
www.meanseeds.com -> provided resource

Field History:

Producer shared that he seeded this pasture himself with a canine friendly seed mix and
worked to keep it clean. This pasture has been previously used for canine training with no
issues. The Producer noted that the buckbrush (*Symphoricarpos occidentalis*) was sprayed with
Grazon (Group 4, broadleaf specific herbicide) approximately 3 months prior to the weed
survey.

Date Surveyed: August 19, 2022 12:30pm-2:30 pm Inspector: Kaylie Kryz

Map:



Field Notes:

South side of field (Orange): main growth forms are grasses and forbs, Smooth Brome (*Bromus inermis*) and Timothy (*Phleum pratense*) mainly. There are sporadic dead tall (1-2 m) buckbrush (*Symphoricarpos occidentalis*) bushes, sparse Canada Thistle (*Cirsium arvense*) throughout, patches of Yellow Toadflax (*Linaria vulgaris*) noted. Ticklegrass (*Agrostis scabra*) in the slough on the south side. Far west fence line contains small Wild Oat (*Avena fatua*) patches right on the fence line and did not expand into pasture yet. Areas of thick Cicer Milk Vetch (*Astragalus cicer*) gone to seed on west and northwest sides. No evidence of target weeds Foxtail Barley (*Hordeum jubatum*), Cheatgrass/Downy Brome (*Bromus tectorum*), or Canada Wild Rye (*Elymus canadensis*) on site. Survey of south side consisted of two laps on either side of the flagged line in the field east to west, fanned out to survey the area from the first flag on the east side to the barbed wire fence on the west end(see map above).

North side of field (Yellow): main growth forms are shrubs and grasses. Consists of a top story of sprayed dead buckbrush (*Symphoricarpos occidentalis*). Understory is thick, mostly Smooth Brome (*Bromus inermis*) and Meadow Brome (*Bromus commutatus*) with an array of other grasses. Sparce Timothy (*Phleum pratense*), with some Ticklegrass (*Agrostis scabra*), some Canada Thistle (*Cirsium arvense*), but not as much as south side. Clean far fence line on west end. No evidence of target weeds Foxtail Barley (*Hordeum jubatum*), Cheatgrass/Downy Brome (*Bromus tectorum*), or Canada Wild Rye (*Elymus canadensis*) on site. Survey of north side consisted of two fanned out loops of the pasture (see map above).

Images:



View of South area from east end by first flag facing west.



Timothy head, found in south area.



Timothy and Smooth Brome, found in south area.



Yellow Toadflax patch, found in south area.



Mature seed head of Cicer Milk Vetch, found on west end of the south area.



Ticklegrass head, found in slough on south end of the south area.



View of south area from west end facing east.



View of west end fence line of south area, wild oats visible.



Wild oat head, found on west fence line of south area.



View of north area from the southeast corner, facing northwest. Dead Buckbrush story visible.



Timothy, Smooth Brome, and Meadow Brome, found in north area.



Timothy head, found in north area.



View of clean fence line on far west end of north area.

Pasture Weed Assessment

Producer: Alex Stewart

Field Name: Small field **LLD:** SE 35-50-5-W4

Field size: 28 ac (11 ha)

Target/Problem weeds:

Foxtail Barley (*Hordeum jubatum*), Cheatgrass/Downy Brome (*Bromus tectorum*),

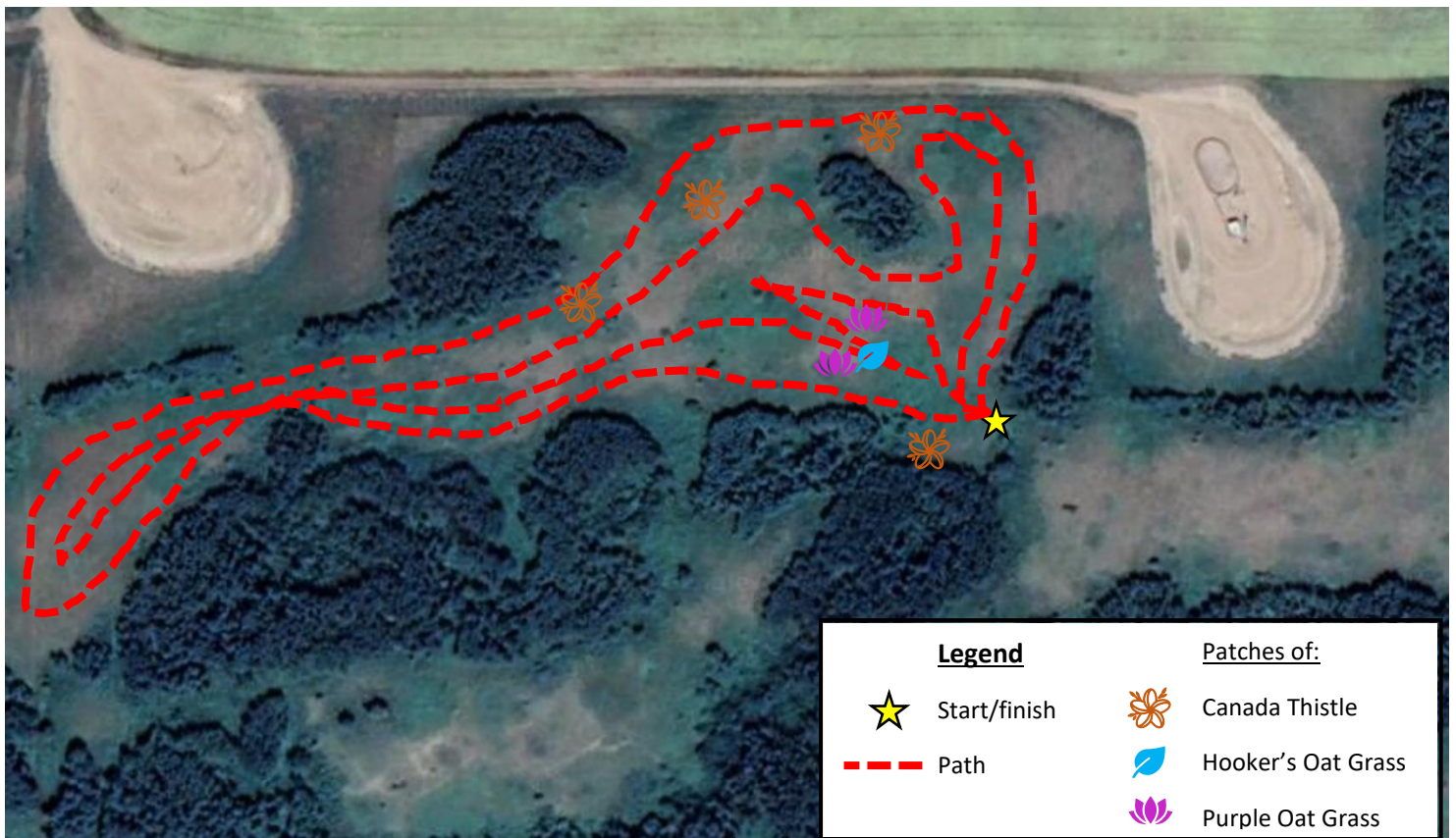
Canada Wild Rye (*Elymus canadensis*)

www.meanseeds.com -> provided resource

Field History: Producer noted that this pasture is a native rangeland that never been broken. Producer mentions plans to spray the Canada Thistle and Buckbrush, has not done so as of survey date. On this quarter, asked to survey a smaller specific area on the northwest corner between the two oil site and just south of them.

Date Surveyed: August 19, 2022 2:45 pm-3:30 pm **Inspector:** Kaylie Kryz

Map:



Field Notes:

Large Canada Thistle (*Cirsium arvense*) patches were noted on the path from the road on the east end of the pasture to the area that was being surveyed. The surveyed area is mostly made up of native grasses and forbs. Patches of small (<1 m tall) shrubs: Buckbrush (*Symphoricarpos occidentalis*), Wild Red Raspberry (*Rubus idaeus*), and Prickly Rose (*Rosa acicularis*). Grasses were a mix of native species with Smooth Brome (*Bromus inermis*) interspersed and in patches. Patches of Canada Thistle (*Cirsium arvense*) throughout. Grasses to note on the east side knoll/opening include Hooker's Oat grass (*Helictotrichon hookerii*) and Purple Oat grass (*Schizachne purpurascens*). These were of interest because of their awn characteristics, when confirming with reference material and producer, these species were not of concern. No evidence of target weeds Foxtail Barley (*Hordeum jubatum*), Cheatgrass/Downy Brome (*Bromus tectorum*), or Canada Wild Rye (*Elymus canadensis*) on site. The survey was done doing two fanned out laps of the area, with further investigation of the knoll on the east side (see map above).

Images:



View of pasture area to be surveyed from east end facing northwest.



Canada Thistle patch on north end near fence.



Purple Oat Grass growing in south east part of pasture



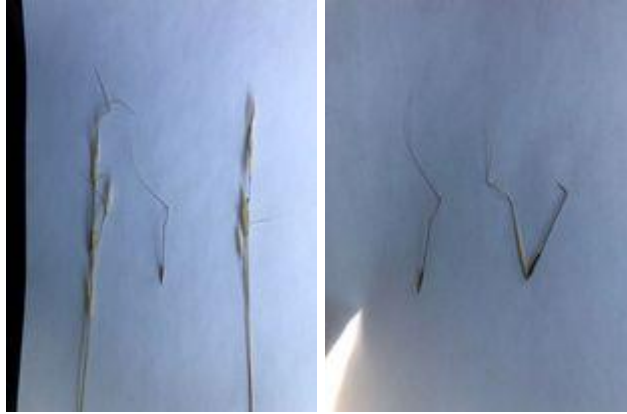
Purple Oat Grass



Photo taken from east end facing west, of area Purple Oat Grass and Hooker's Oat grass were found.



Native grass species mix seen at site



Up close of Hooker's Oat Grass plant, glume, and seed.



Up close of Purple Oat Grass plant, glume, and seed.



Up close of a green/younger Purple Oat Grass plant, glume, and seed. Leaf in third photo shows pubescence (Hairs) and no auricles. Head separated in fourth photo shows short panicle inflorescence.

Summary:

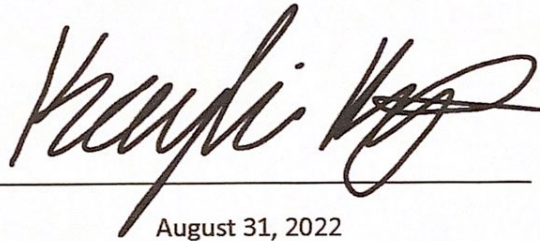
In Conclusion it was found that both of the fields surveyed, The Home Quarter (SE 20-50-3-W4) and the Small Field (SE 35-50-5-W4), are CLEAN of the target/problem weeds that included Foxtail Barley (*Hordeum jubatum*), Cheatgrass/Downy Brome (*Bromus tectorum*), or Canada Wild Rye (*Elymus canadensis*).

Inspector

Kaylie Krys, AAg

License # 103519

Saskatchewan Institute of Agrology



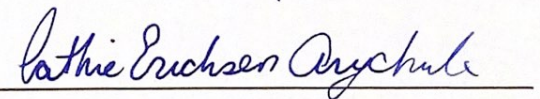
August 31, 2022

Supervisor

Cathie Erichsen Arychuk, PAg

License # 1509

Alberta Institute of Agrology



August 31, 2022

Reference Materials:

www.meanseeds.com

<https://prairielocator.com/dashboard>

<https://www.minnesotawildflowers.info/grass-sedge-rush/false-melic-grass>

Royr, F., and R. Dickinson. 1999. Weeds of Canada and the Northern United States (first edition, seventh edition, 2006). The University of Alberta Press/Lone Pine Publishing.

Tannas, K. 2001. Common Plants of the Western Rangelands: Volume 1 Grasses and Grass-like Species (first edition). Alberta Agriculture and Rural Development Publications Office.

Tannas, K. 2004. Common Plants of the Western Rangelands: Volume 3 Forbs (first edition). Alberta Agriculture and Rural Development Publications Office.